

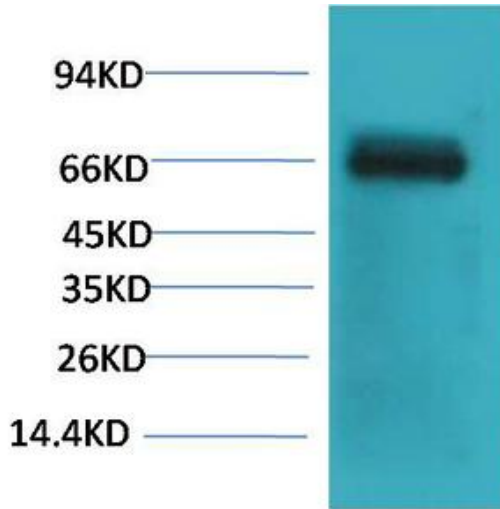


# Bovine Serum Albumin Monoclonal Antibody(Mix-mA)

<b>Catalog No</b>	YP-Ab-01146
<b>Isotype</b>	IgG
<b>Reactivity</b>	Cow
<b>Applications</b>	WB
<b>Gene Name</b>	
<b>Protein Name</b>	
<b>Immunogen</b>	Purified Protein
<b>Specificity</b>	The antibody detects endogenous Bovine Serum Albumin protein.
<b>Formulation</b>	PBS, pH 7.4, containing 0.5%BSA, 0.02% sodium azide as Preservative and 50% Glycerol.
<b>Source</b>	Monoclonal, Mouse
<b>Purification</b>	The antibody was affinity-purified from mouse ascites by affinity-chromatography using epitope-specific immunogen.
<b>Dilution</b>	WB: 1:1000-2000
<b>Concentration</b>	1 mg/ml
<b>Purity</b>	≥90%
<b>Storage Stability</b>	-20°C/1 year
<b>Synonyms</b>	
<b>Observed Band</b>	66kD
<b>Cell Pathway</b>	
<b>Tissue Specificity</b>	
<b>Function</b>	
<b>Background</b>	Albumin is the most abundant protein in the circulatory system. In mammals albumin is synthesized initially as preproalbumin by the liver. After removal of the signal peptide, the resultant proalbumin is further processed by removal of the six-residue propeptide from the new N-terminus. The albumin released into circulation possesses a half-life of 19 days.
<b>matters needing attention</b>	Avoid repeated freezing and thawing!
<b>Usage suggestions</b>	This product can be used in immunological reaction related experiments. For more information, please consult technical personnel.



## Products Images



Western blot analysis of Bovine Serum Albumin using Bovine Serum Albumin Monoclonal Antibody.